



# Public Advisory Committee

## Detailed Forest Management Plan Development



February 7th, 2006

NAIT - High Level, AB

# Detailed Forest Management Plan

“A long-term plan used to outline higher level management objectives, sustainability and timber production assumptions for a Forest Management Agreement (FMA) area”

# What is in a Detailed Forest Management Plan?

- Terms of Reference
- Comprehensive Description of the Area
- Corporate Overviews & Management Approach
- Landscape Assessment
- Summary of Previous Management Plans
- Statement of Values, Objectives, Indicators, and Targets
- Current Status and Forecasts
- Description of Chosen Strategy & Harvest Sequence
- Description of Monitoring Plan & “Linkages”

Plan Development  
Team



Public Participation  
Group

- FMA Planners
- AB Forest Planner
- Forest Area Planner
- AB Fish & Wildlife
- AB TSA & G&Y Foresters
- Embedded Operators
- AB Operations Forester
- PAC Member(s)?



# What is in a Detailed Forest Management Plan?

- Terms of Reference
- Comprehensive Description of the Area
- Corporate Overviews & Management Approach
- Landscape Assessment
- Summary of Previous Management Plans
- Statement of Values, Objectives, Indicators, and Targets
- Current Status and Forecasts
- Description of Chosen Strategy & Harvest Sequence
- Description of Monitoring Plan & “Linkages”

# Value

A DFA-Specific  
Characteristic considered  
to be important



# Objective

A Broad statement  
describing a desired  
future state or condition  
for a Value



# Indicator

A Variable that  
measures the state or  
condition of a value



# Target

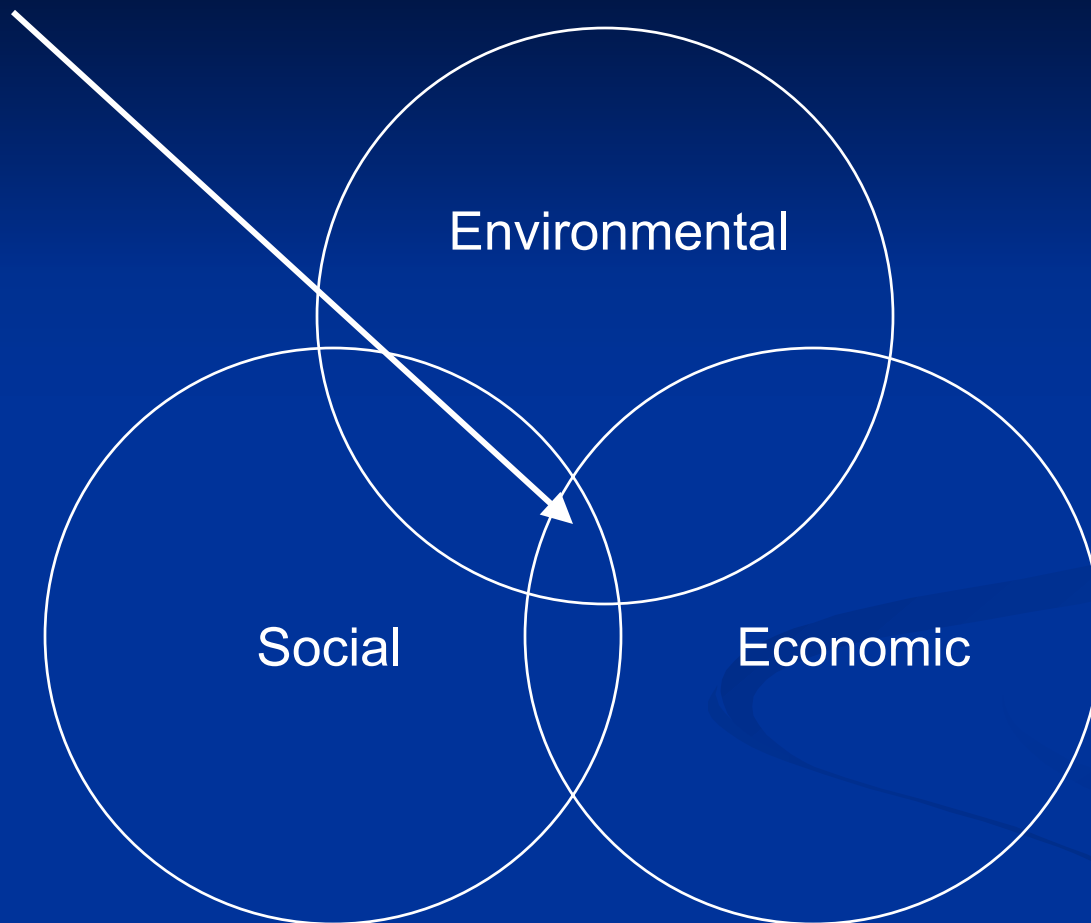
A specific statement  
describing a desired future  
state or condition of  
an indicator



# So What Are the Criteria?

1. Conservation of Biological Diversity
2. Maintenance & Enhancement of Forest Ecosystem Condition & Productivity
3. Conservation of Soil & Water Resources
4. Forest Ecosystem Contributions to Global Ecological Cycles
5. Multiple Benefits to Society
6. Accepting Society's Responsibility for Sustainable Development

# “The Balance” - where we want to be!





# So Where Do We Start?

- Review required Values, Objectives, Indicators, and Targets (VOIT's) as defined by Alberta
- Evaluate *current* VOIT's as well as other strategies outlined in the companies:
  - Detailed Forest Management Plan (2003)
  - Sustainable Forest Management (SFM) Plan (2005)
- Identify additional VOIT's or revise current management strategies/VOIT's where deemed appropriate.

# So Where Do We Start?

- Review required Values, Objectives, Indicators, and Targets (VOIT's) as defined by Alberta
- Evaluate *current* VOIT's as well as other strategies outlined in the companies:
  - Detailed Forest Management Plan (2003)
  - Sustainable Forest Management (SFM) Plan (2005)
- Identify additional VOIT's or revise current management strategies/VOIT's where deemed appropriate.

# Example:

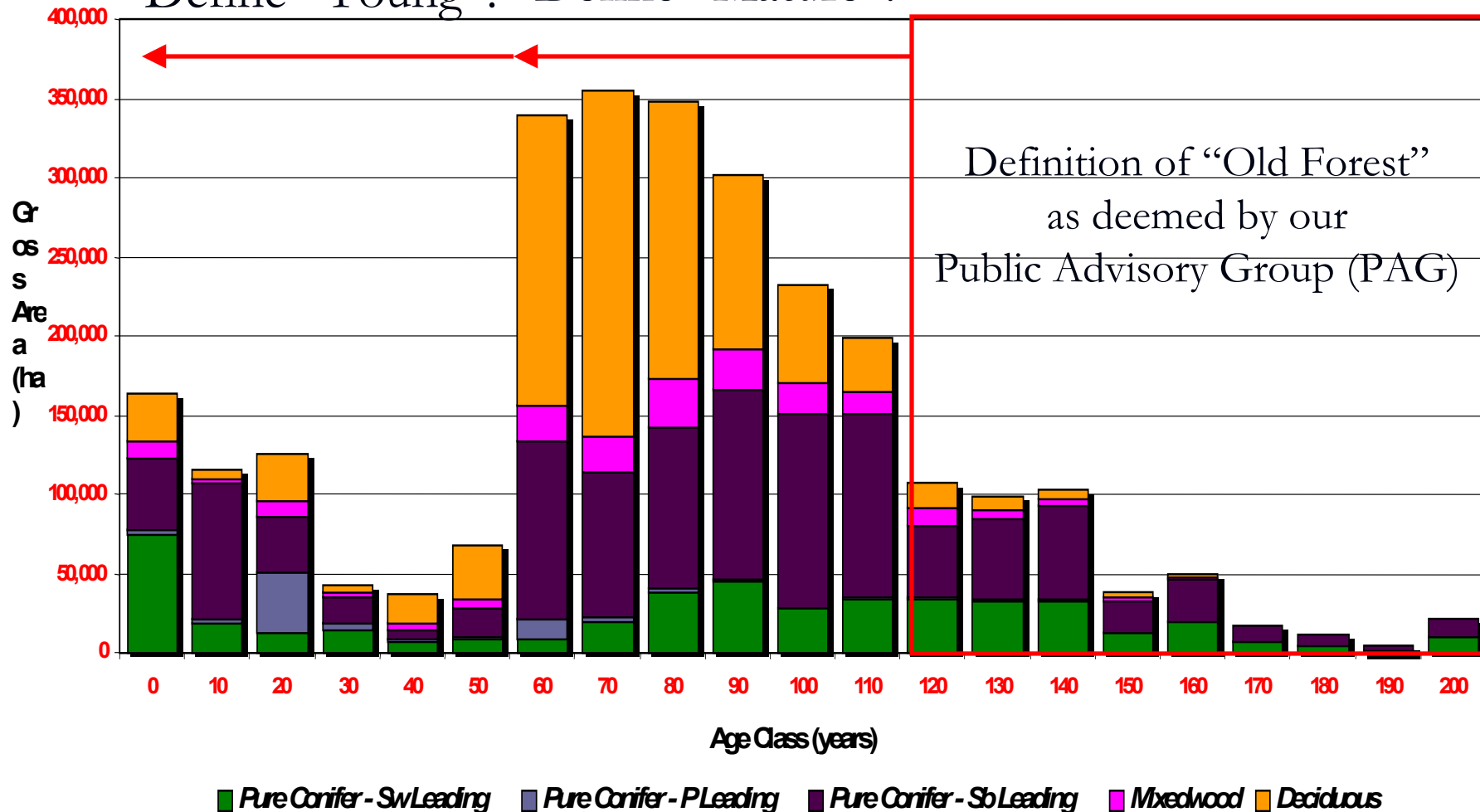
CCFM Criterion	CSA SFM Elements	Value	Objective	Indicator	Target	Means To Target	Legal/Policy Requirements
Conservation of Biological diversity	Conserve Ecosystem Diversity	Landscape scale Biodiversity	1. Maintain Biodiversity By Retaining the Full Range of Covertypes and Seral Stages	Area of Old, Mature, and Young forest in each DFA Sub-Unit	Over the 200-Year Planning Horizon a) Gross Landbase > X% Old forest, > Y% Mature Forest, and Z% Young Forest, b) Net Landbase > X% Old Forest, Y% Mature Forest, and Z% Young Forest	Targets and seral stage definitions shall be based on sound science, ecological considerations, wildlife zones, and disturbance regimes. Target shall ensure representation of natural ecosystem attributes.	Planning Standard

- Planning Standard also outlines specifics on the means to achieve the objective and target, monitoring and measurement, reporting, and acceptable variances.

- The indicator is “Area” and will be what we measure over time.
- Define “Old”, “Mature”, and “Young”
- How much “area” of old, mature, and young forest needs to be maintained and where?
- Coniferous, Deciduous, and Mixedwood targets
- Gross vs. Net Landbase

Indicator	Target
Area of Old, Mature, and Young forest in each DFA Sub-Unit	Over the 200-Year Planning Horizon a) Gross Landbase > X% Old forest, > Y% Mature Forest, and Z% Young Forest, b) Net Landbase > X% Old Forest, Y% Mature Forest, and Z% Young Forest

# Define "Young"? Define "Mature"?



# So Where Would We Start?

- Define “Young”, “Mature”, and “Old Forest”

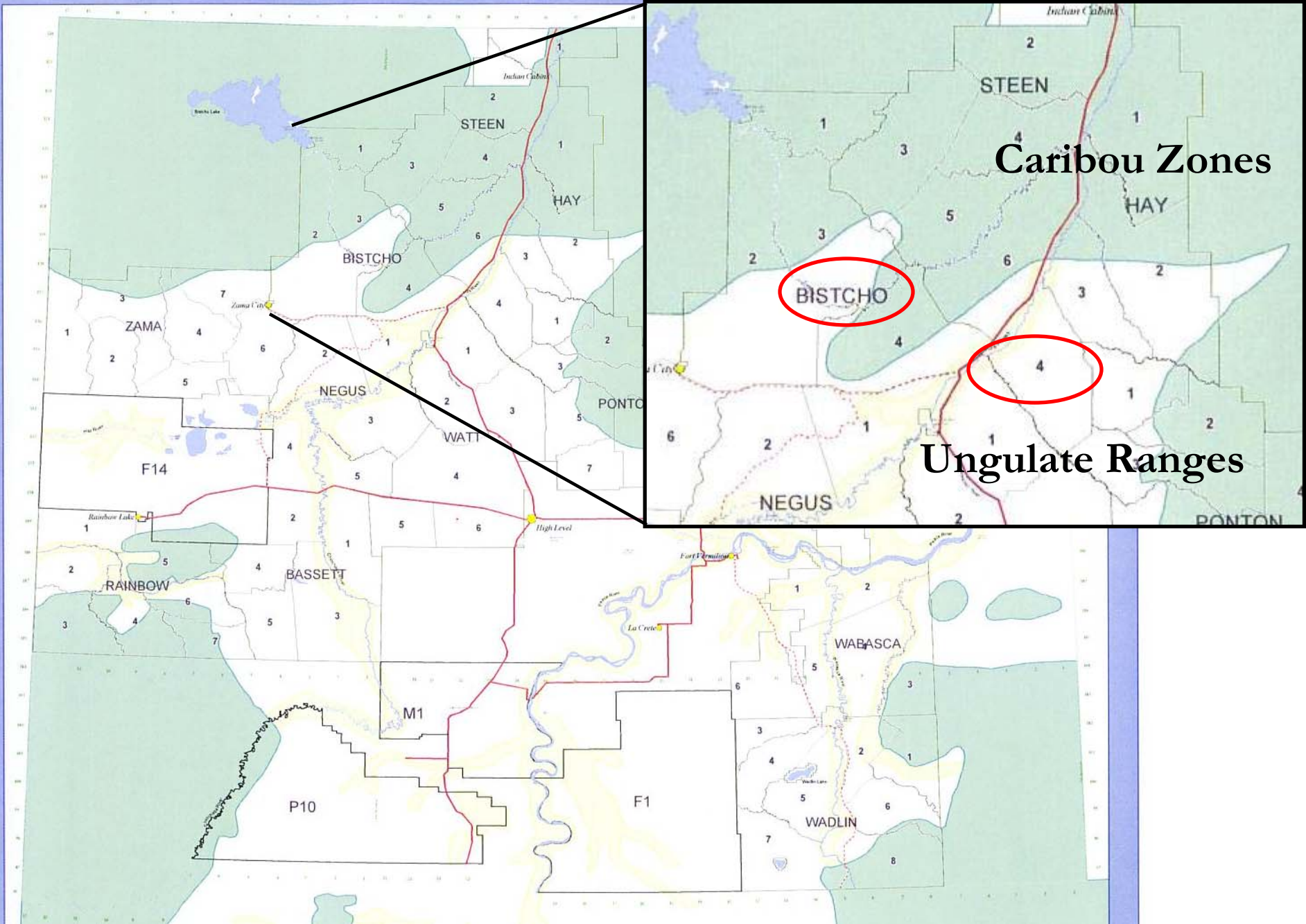
# Variability Across Canada

FOREST REGION	OLD-GROWTH INITIATED	OLDEST TRESS
West Coast (Temperate)	150 Years	1000 Years
Montane (B.C.)	100 years	350 Years
Great-Lakes St. Lawrence	150 Years	400 Years
Boreal (Dry)	100 Years	250 Years
Boreal (Wet)	100 Years	250 Years
Acadian	150 Years	400 Years



# So Where Would We Start (Cont.)

- Define “Young”, “Mature”, and “Old Forest”
- Identification of Sub-Units and other “zones” of interest (ex. caribou zones).



**Caribou Zones**

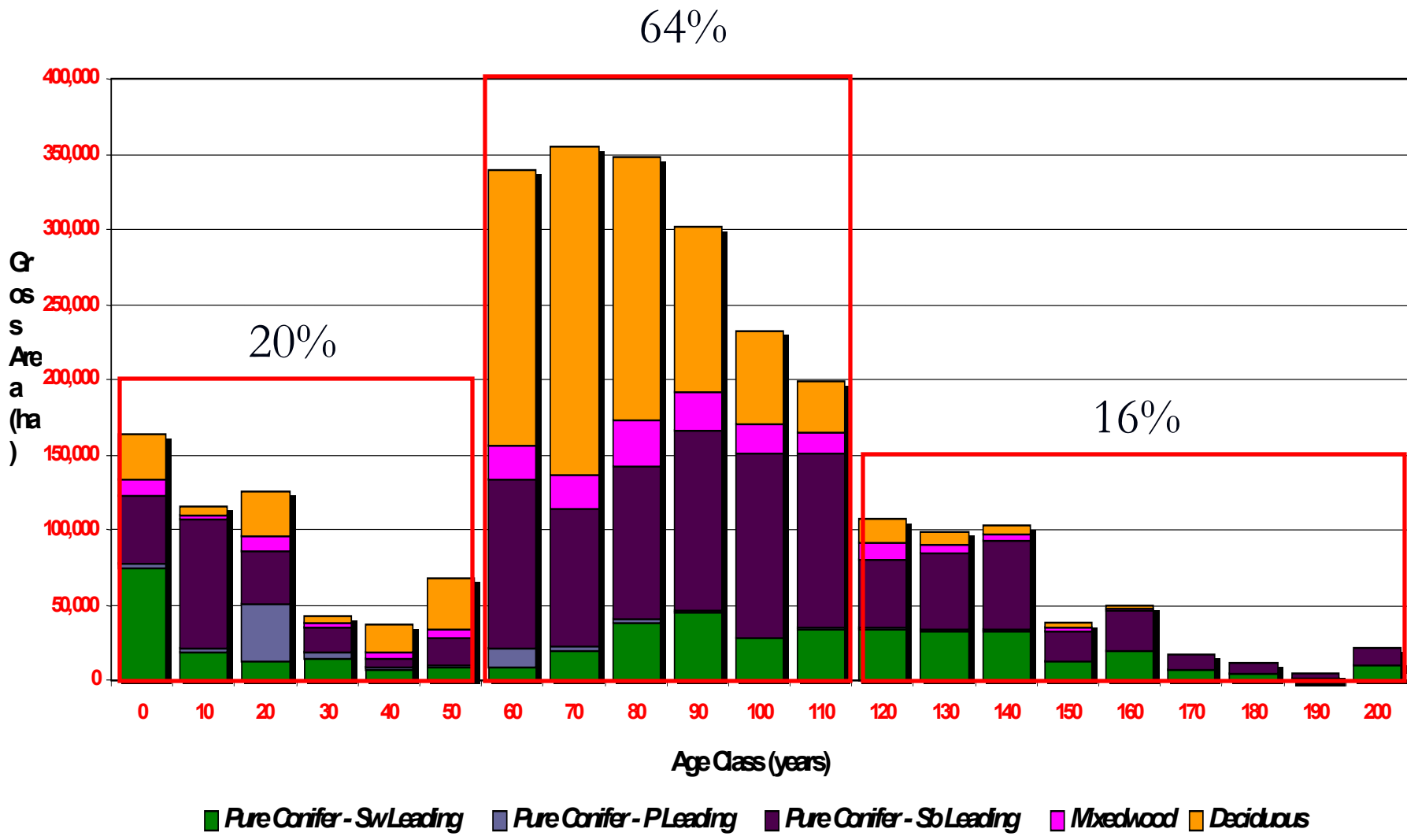
**BISTCHO**

**4**

**Ungulate Ranges**

# So Where Would We Start (Cont.)

- Define “Young”, “Mature”, and “Old Forest”
- Identification of Sub-Units and other “zones” of interest (ex. caribou zones).
- Assess current\* levels of each category or class



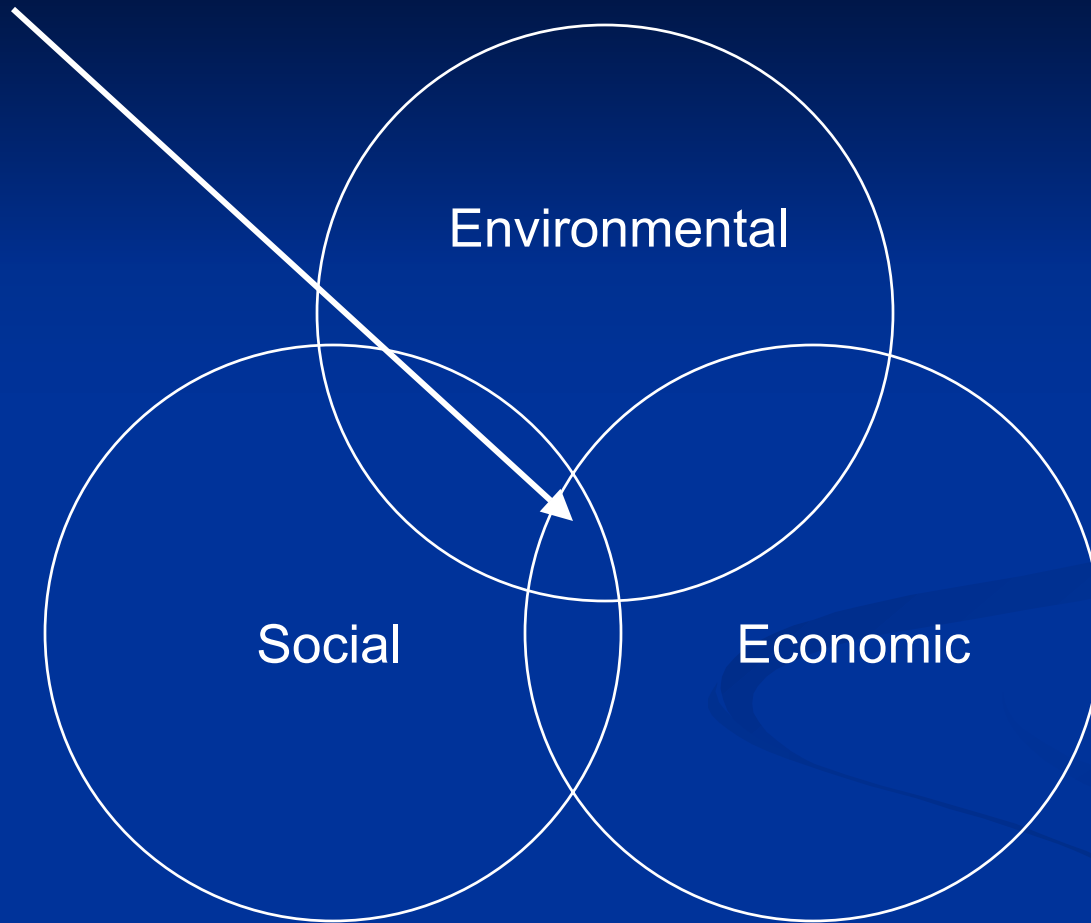
# So Where Would We Start (Cont.)

- Define “Young”, “Mature”, and “Old Forest”
- Identification of Sub-Units and other “zones” of interest (ex. caribou zones).
- Assess current\* levels of each category or class
- Develop Management Strategy (2%, 5%.....10%!)

# So Where Would We Start (Cont.)

- Define “Young”, “Mature”, and “Old Forest”
- Identification of Sub-Units and other “zones” of interest (ex. caribou zones).
- Assess current\* levels of each category or class
- Develop Management Strategy (2%, 5%.....10%!)
- Explore “Trade-offs”!

# “The Balance” = “Preferred Forest Mgmt. Strategy”





# Alberta Planning Manual

Planning Manual Requirement Category	Frequency
Public <i>Involvement</i> (Direct)	3*
Public <i>Involvement</i> (In-Direct)	5
Existing Commitment	7
Public <i>Advisory</i> (Direct)	14
Compliance	5
<b>Totals</b>	<b>34</b>

# So Where Do We Start?

- Review required Values, Objectives, Indicators, and Targets (VOIT's) as defined by Alberta
- Evaluate *current* VOIT's as well as other strategies outlined in the companies:
  - Detailed Forest Management Plan (2003)
  - Sustainable Forest Management (SFM) Plan (2005)
- Identify additional VOIT's or revise current management strategies/VOIT's where deemed appropriate.

# Current Values, Objectives, Indicators, and Targets

- The companies will review current commitments made in other processes to determine the following:
  - Alignment with the new Alberta Planning Manual requirements
  - Evaluate current performance of existing commitments and to evaluate the effectiveness of the “targets”
  - Commitments not required by Alberta will be evaluated to determine relevance to the VOIT framework.

# So Where Do We Start?

- Review required Values, Objectives, Indicators, and Targets (VOIT's) as defined by Alberta
- Evaluate *current* VOIT's as well as other strategies outlined in the companies:
  - Detailed Forest Management Plan (2003)
  - Sustainable Forest Management (SFM) Plan (2005)
- Identify additional VOIT's or revise current management strategies/VOIT's where deemed appropriate.

# Additional VOIT's?

- “Outstanding Items” identified during previous forest management planning processes
  - Detailed Forest Management Plan
  - Sustainable Forest Management Plan
- Issues previously identified through the PAC or other public advisory initiatives.
- New issues....

# Timelines....

Task	Timelines
Review "Outstanding Items" from Previous Processes	March 7 <sup>th</sup> 2006
Draft Values, Objectives, Indicators & Targets (Part A)	April 4 <sup>th</sup> 2006
Draft Values, Objectives, Indicators & Targets (Part B)	June 6 <sup>th</sup> 2006
Draft Values, Objectives, Indicators & Targets (Part C)	July 4 <sup>th</sup> 2006
Preliminary Values, Objectives, Indicators & Targets	Sept. 5 <sup>th</sup> 2006

# The End

Questions?