

Sustainable Forest Management

Annual Review of Performance to
Indicators and Targets
2007-2008 reporting period

Public Advisory Committee
November 4, 2008

Outline

- 32 Commitments which the companies are measured against, plus others.
 - Approved DFMP
 - Sustainable Forest Management Plan
- In this presentation 16 commitments will be covered.
- Remaining 16 (and other items) will be covered at the December meeting.

Outline (cont'd)

- Commitment #
- Objective, Indicator and Target
- Discussion, chart, table
- Plan for go forward if target was not achieved

#3: Area of Ecological Significance

- **Objectives:** Maintain areas of ecological significance.
 - **Indicators:** Area (ha) removed from the productive landbase to incorporate areas of ecological significance.
 - **Targets:** Peace River Islands & Ponton River Corridor removed from the productive landbase during the calculation of the Annual Allowable Cut (AAC). No variance is acceptable.
- No activities within these areas
 - VOIT has been amended in SFM Plan for the 2008/2009 harvest period
 - Provides opportunity for improvement

#8: Wildlife Zones

- **Objective:** To incorporate the needs of wildlife into operational planning to minimize the effects of operations on wildlife populations.
- **Indicator (of 4): 4.** ASRD approved operational plans in critical wildlife zones.
- **Target (of 6): 6.** 100% compliance with operational plans.
- **Caribou Protection Area:** BT4, BO2, RW5, SN1/2/6 and ZA3
- **Ungulate Winter Range:** HY1, NS1/3, SN1/2, WA1*, WT1
- **Companies:** Tolko, LaCrete*

#9: Orchard Stock

- **Objective:** To ensure that cutblocks are reforested with genetically diverse seedlings.
- **Indicator (of 2): 1.** The amount of area (ha) planted with seedlings from orchard stock.
- **Target (of 2): 1.** $<25\%(+/-5\%)$ of the area harvested in the DFA will be planted with seedlings from orchard seed.
- No orchard stock was used during the 2007 planting season.

#11: Areas of Biological Significance

- **Objective:** To identify and protect areas of biological significance.
- **Indicator:** Final Harvest Plans (FHP) which identify protection mechanisms for areas of biological significance.
- **Target:** 100% compliance with strategies outlined in FHPs to protect areas of biological significance.
- During the 2007-2008 harvest season, no activities occurred in proximity to areas of biological significance that would have required special protection strategies.

#12: Watt Mountain Natural Area

- **Objective:** To protect the unique features within the area identified as the Watt Mountain Natural Area (WMNA).
- **Indicator:** Annual Operating Plans which outline operational strategies to mitigate impacts to the WMNA.
- **Target:** 100% compliance with strategies outlined in AOP's for the WMNA to protect areas of biological significance.
- During the 2007-2008 harvest season, there were no harvesting and/silvicultural operations near the Watt Mountain Natural Area.

#16: Rutting Disturbance

- **Objective:** To minimize the effects of timber harvesting and/or silvicultural operations on soil productivity.
- **Indicator: (of 3)** 2. Rutting Disturbance
- **Target: (of 3)** 2. Rutting should not exceed 2% of the total area harvested.
- 1 occurrence of rutting along haul road by PL
- No reclamation occurred due to FFP not operating
- Outstanding item

#17: Soil Productivity

- **Objective:** To minimize the effects of timber harvesting and/or silvicultural operations on soil productivity.
- **Indicator: (of 3)** 3. Soil Productivity
- **Target: (of 3)** 3. Timber productivity in managed stands is equal to or greater than unmanaged stands.
- Growth and Yield program established:
 - 35 Permanent Sample Plots (natural)
 - 28 Plantation Permanent Sample Plots (managed)
- 2nd year of establishing permanent plots

#19: Buffer Zone Compliance

- **Objective:** To minimize the effects of timber harvesting and/or silvicultural operations on water quantity and/or quality.
- **Indicator (of 3):** 2. Amount of area and forest cover in riparian zones and along watercourses.
- **Target (of 3):** 2. 100% compliance with approved riparian buffers as outlined in an approved AOP.

Buffer Infractions

Company	Number of Harvest Areas	Occurrences of Buffer Infractions
Tolko Industries Ltd.	222	5
Footner Forest Products Ltd.	-	-
LaCrete Sawmills Ltd.	46	0
Precision Lumber Inc.	-	-
Ridgeview Mills Ltd.	-	-
Che K'Li Enterprises Ltd.	-	-
Dasihowa-Marubeni International Ltd.	-	-
Netaskinan Development Corp.	-	-
Totals	268	5

Corrective Action Plan

- Increased layout checks (2x) in 2007/2008: any infractions resulting from layout would be tied to old work (<2007)
- Layout Quality Control Program for 2008/2009
- Further instruction to contractor/foreman and improve communications
- GPS program with bunchers, skidders and line clearing CATs

#24: Cut Control

- **Objective:** To provide a continuous supply of timber while balancing log profile and distance to mill at or below the approved Annual Allowable Cut (AAC).
- **Indicator:** Volume (m³) harvested during the 5-year cut control period.
- **Target:** Harvest the approved AAC (+/-10%) over the 5-year cut control period.

Periodic Cut Control - FMA Holders

Table 2. Periodic cut control volume (m³), (FMA Holders) quadrant 2003/08.

		2003/04	2004/05	2005/06	2006/07	2007/08	Total
F26 Deciduous	Quadrant Target FFP	701,357	701,357	701,357	701,357	501,357	3,306,785
	Production to Date	370,667 ^{d1}	492,869 ^{d2}	651,913 ^{f1}	516,853 ^{f2}	156,279 ⁱ¹	2,188,581 ⁱ²
F26 Coniferous	Quadrant Target Tolko	1,117,484	1,117,484	1,117,485	1,367,485 ^{a1}	1,367,485 ^{a1}	6,087,423
	Production to Date	880,550 ^{e1}	1,112,198 ^{e2}	1,087,368 ^{g1}	1,294,029 ^{g2}	1,002,801 ^{h1}	5,376,946 ^{h2}

^{a1} Quadrant target increased due to increase in AAC for 2006/2007 and 2007/2008 seasons (AAC set at 1,450,000m³/yr)

^{d1} 7,929m³, and ^{d2} 7,096m³ of deciduous volume was charged to the FMA for 2003/04, and 2004/05 for in block structure retention and are included in the totals

^{e1} 11,635m³, and ^{e2} 14,353m³ of conifer volume was charged to the FMA for 2003/04, and 2004/05 for in block structure retention and are included in the totals

^{f1} 17,981m³, and ^{f2} 9,876m³ of deciduous volume was charged to the FMA for 2005/06, and 2006/07 for in block structure retention and are included in the totals

^{g1} 23,021m³, and ^{g2} 16,206m³ of conifer volume was charged to the FMA for 2005/06, and 2006/07 for in block structure retention and are included in the totals

^{h1} 21,327m³ of conifer volume was charged to the FMA in 2007/2008 due to a change in utilization standards from 15/11 to 15/13. Tolko still needs to reconcile structure retentions for the 2007/2008 operating season

^{h2} 710,477m³ conifer volume undercut in quadrant period covering 2003/08. Will be carried over to next cut period 2008/13

ⁱ¹ FFP still needs to reconcile structure retention volumes for the 2007/08 operating season

ⁱ² 1,118,204m³ deciduous volume undercut in quadrant period covering 2003/08. Will be carried over to next cut period 2008/13



Public Advisory Committee
November 4, 2008



Periodic Cut Control – Quota Holders

Table 3. Periodic cut control volume (m³), (imbedded quota holders FMA).

		2006/07	2007/08	2008/09	2009/10	2010/11	Total
DTAF260006 DTAF260003	Quadrant Target DMI	179,837	179,837	179,837	179,837	179,837	899,185
	Production to Date	76,111	170,122	0	0	0	246,233
DTAF260002 DTLF260002	Quadrant Target Ridgeview	18,288	118,288 ^{a1}	118,288 ^{a1}	118,288 ^{a1}	118,288 ^{a1}	491,440
	Production to Date	18,288	0	0	0	0	18,288
DTAF260003 DTLF260001	Quadrant Target Netaskinan	30,000	30,000	30,000	30,000	30,000	150,000
	Production to Date	0	0	0	0	0	0
DTAF260004 DTLF260001	Quadrant Target Netaskinan	50,000	50,000	50,000	50,000	50,000	250,000
	Production to Date	35,478	0	0	0	0	35,478
DTAF260001 DTLF260005	Quadrant Target Precision	18,288	118,288 ^{a1}	118,288 ^{a1}	118,288 ^{a1}	118,288 ^{a1}	491,440
	Production to Date	16,369	0	0	0	0	16,369
DTAF260005	Quadrant Target Che K'li	2,230	2,230	2,230	2,230	2,230	11,150
	Production to Date	0	0	0	0	0	0

^{a1} Both the Precision and Ridge view DTA's have been adjusted to 118,288m³ based on the 200,000m³ allocation from the FFP FMA allocation (based on letter from Forest Management Branch dated December 20, 2008).

#25: Historical Resources

- **Objective:** To conduct operations while minimizing impacts on historical, recreational, unique ecological, aesthetic, or other land uses of significance.
- **Indicator (of 3):** 1. Compliance with the Historical Resources Act
- **Target (of 3):** 1. 100% compliance with the Historical Resources Act
- Historical resources screening by Alberta Western Heritage.
 - Identify potential conflicts with existing or predicted historical resource site locations
- Fieldwork started in September 2007
- All operations in compliance with Historical Resources Act

Historical Resources – sample report

Name	Date Time	Zone	Easting	Northing	Altitude	Operating Area	Development	Site Type	Site Content
Cabin 1 (Blackcrow's)	9/18/2007 14:31	11 V	622029	6470108	259	Wadlin 6	WA2M1S3	Historic	Cabin
Cabin 2 (HBC warehouse?)	9/18/2007 15:47	11 V	619960	6470691	241.9	Wadlin 6	north of WA2M1S3	Historic	Cabin
Cabin 3	9/18/2007 16:25	11 V	619889	6470730	237.3	Wadlin 6	north of WA2M1S3	Historic	Cabin
Cabins 4 and 5	9/18/2007 16:39	11 V	619798	6470750	245.7	Wadlin 6	north of WA2M1S3	Historic	Two cabins
Cabin 6	9/20/2007 14:48	11 V	592720	6468904	244.1	Wadlin 6	Within proposed block	Historic	Cabin
Cabin 7	9/23/2007 10:55	11 V	483665	6642151	402.4	Steen	Harvest Block 674	Historic	Cabin



Public Advisory Committee
November 4, 2008



#26: Landbase to incorporate aesthetics

- **Objective:** To conduct operations while minimizing impacts on historical, recreational, unique ecological, aesthetic, or other land uses of significance.
- **Indicator (of 3):** 2. Area (ha) removed from productive landbase to incorporate aesthetics.
- **Target (of 3):** 2. Ponton River Corridor and Peace River Islands removed from the productive landbase during the calculation of the AAC.
- Removed from land base in previous DFMP
- No activities within this area in 2007-2008

#27: Stakeholder Input

- **Objective:** To conduct operations while minimizing impacts on historical, recreational, unique ecological, aesthetic, or other land uses of significance.
- **Indicator (of 3):** 3. Forest Management Plans (FMP) which incorporated the needs of other stakeholders.
- **Target (of 3):** 3. Reasonable efforts have been made to incorporate the needs of other stakeholders in FMPs.
- Communication module on the companies Environmental Management System website has records of all communications with stakeholders including: O&G, trappers, First Nations, Recreational groups, general public, and Loggers
- Depending on nature of communication, notifications were provided to staff to act on item
- Companies actively contact stakeholders regarding our plans

#29: Agreements

- **Objective:** To schedule harvest activities to meet contractual obligations.
- **Indicator:** The number of Business and Wood Supply Agreements (WSA's) with local tenure holders and processing facilities.
- **Target:** 100% adherence to contractual obligations and agreements.

Agreements 2007-2008

- Tolko
 - La Crete Sawmills Ltd.
 - Precision Lumber Products Inc.*
 - Little Red River Cree Nation
 - Crestview Sawmills Ltd.
- FFP
 - No operations for 2007/2008 season

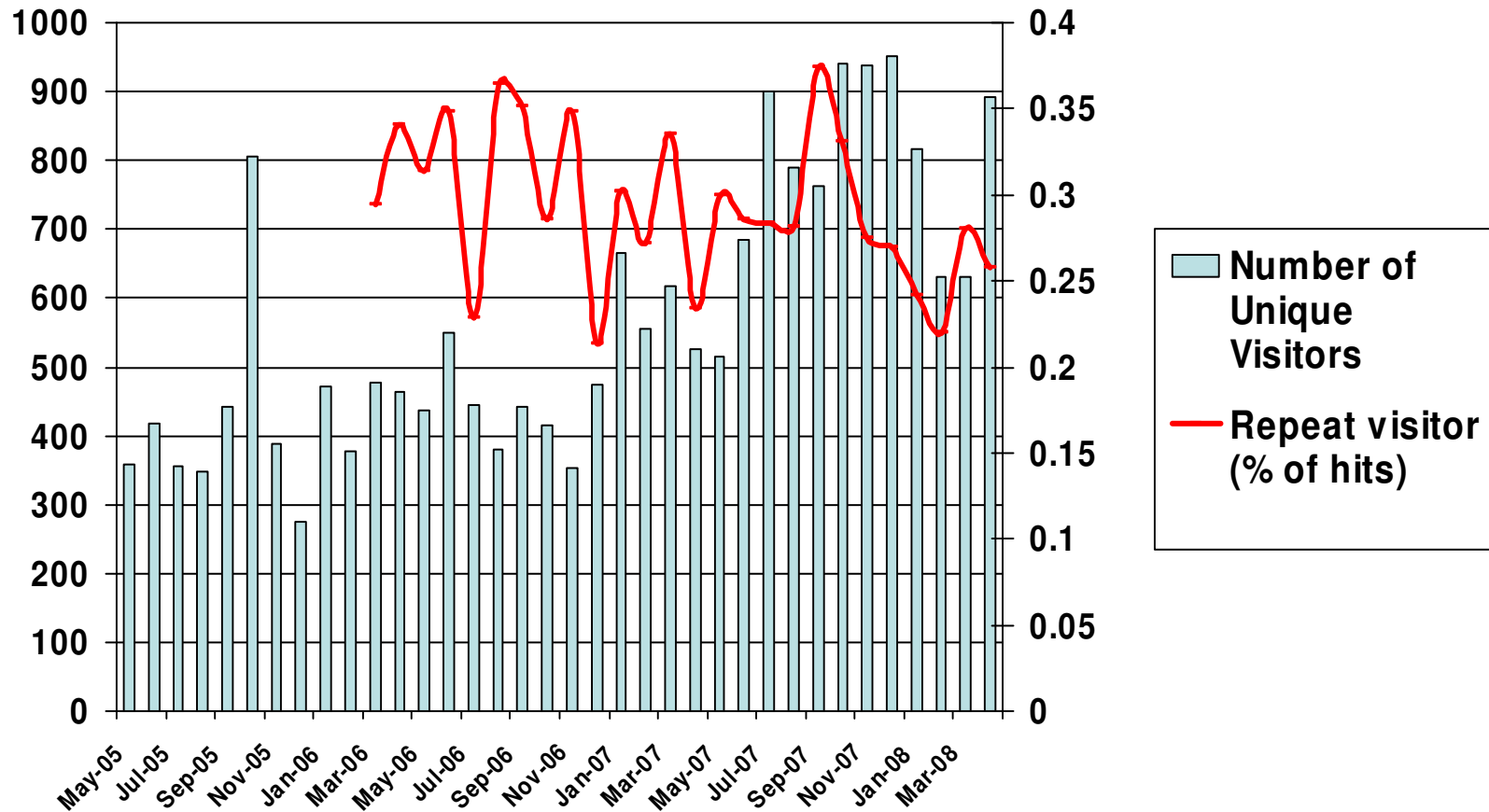
#30: Aboriginal Consultation

- **Objective:** To incorporate and continue a public involvement plan.
- **Indicator:** Percentage of aboriginal communities that are consulted annually regarding operations.
- **Target:** The Companies will seek input and/or representation from each of the Aboriginal communities affiliated with the North Peace Tribal Council and Paddle Prairie Metis settlement regarding operational planning and/or participation in advisory groups. No variance is acceptable.
- **Open Houses, (attendance):**
 - Beaver First Nation (2)
 - Chateh (3)
 - Garden River (6)
 - North Tall Cree (1)
 - South Tall Cree (1)
 - Paddle Prairie (0)
 - John D'Or Prairie (0)
 - Fox Lake (0)
 - Bushe River (1)
 - Meander River (8)

#31: Public Participation

- **Objective:** To develop and implement a public participation process that meets the needs of the public and stakeholders while meeting the CSA requirements.
- **Indicator:** The number of different opportunities and mechanisms for public input and the level of participation in each component.
- **Target:** The Companies will implement a number of mechanisms for public participation according to the CSA Z809-02 guidelines.
- Public Advisory Committee
 - 2 Special Speakers
 - 1 Field Tour
- Open Houses
- Website
- Newspaper articles / Ads

Website Statistics



#32: Forestry Awareness

- **Objective:** To increase knowledge and awareness of forest management planning and operations.
- **Indicator:** The number of different opportunities and mechanisms used to increase awareness of forestry.
- **Target:** Continual improvement in the number of mechanisms used.

#32: Forestry Awareness

Categories	Timber Year				
	2003/04	2004/05	2005/06	2006/07	2007/08
NLFES	1	1	1	1	1
Forestry Week	1	1	1	1	0
Presentations*	3	10	5	9	5
Tours	1	5	6	10	4
Surveys	0	1	0	1	0
Audits	0	1	1	1	1
Did you Know? Articles	0	1	1	0	6
Career Fair Attendance	0	0	1	4	1
Forest Education Materials	0	0	1	1	0
SUM	6	20	17	28	18

Next meeting to review

- #1: Adherence to Spatial Harvest Sequence
- #2: Covertypes
- #4: Age Class Distribution
- #5: Habitat Availability
- #6: Vertical and Horizontal Retention
- #7: Coarse Woody Debris
- #10: Compliance with Seed Zones
- #13: Volume from Budworm areas
- #14: Salvage from natural disturbance
- #15: Road Disturbance
- #18: Water Resources – Adherence to SHS
- #20: Watercourse Crossings
- #21: Reforestation Activities
- #22: Area identified as being SR
- #23: Forested area on DFA
- #28: Opportunities

Questions?



Public Advisory Committee
November 4, 2008

