



# Sustainable Forest Management

## Annual Review - Part 3 of 3

Public Advisory Committee  
December 5, 2006

# Multiple Benefits to Society

- **Indicator:** Volume ( $\text{m}^3$ ) harvested during the 5-year cut control period.
- **Target:** Harvest the approved AAC (+/- 10%) over the 5-year cut control period.

# Periodic Cut Control, FMA holders

		2003/04	2004/05	2005/06	2006/07	2007/08	Total
Coniferous	Quadrant Target Tolko	1,117,484	1,117,484	1,117,485	1,117,485	1,117,485	5,587,423
	Production to Date	853,037	1,084,740	1,068,597	TBD	TBD	3,006,374
Deciduous	Quadrant Target FFP	701,357	701,357	701,357	701,357	701,357	3,506,785
	Production to Date	347,105	493,052	639,740	TBD	TBD	1,479,897

# Periodic Cut Control, Quota Holders

		2003 / 04	2004 / 05	2005 / 06	2006 / 07	2007 / 08	<i>Total</i> 2003 / 06
DTAF260006	Quadrant Target <b>DMI **</b>	235,438	235,438	235,439	133,898	133,898	<b>706,315</b>
	Production to Date	0	34,155	0	<i>TBD</i>	<i>TBD</i>	<b>34,155</b>
DTAF260002	Quadrant Target <b>Ridgeview</b>	26,416	26,416	26,416	26,416	26,416	<b>79,248</b>
	Production to Date	0	0	79,248	<i>TBD</i>	<i>TBD</i>	<b>79,248</b>
DTAF260003	Quadrant Target <b>Netaskinan</b>	33,838	33,838	33,838	30,000	30,000	<b>101,514</b>
	Production to Date	85,562	7,375	8,577	<i>TBD</i>	<i>TBD</i>	<b>101,514</b>
DTAF260004	Quadrant Target <b>Netaskinan</b>	50,503	50,503	50,504	50,000	50,000	<b>151,510</b>
	Production to Date	3,867	37,569	110,074	<i>TBD</i>	<i>TBD</i>	<b>151,510</b>
DTAF260001	Quadrant Target <b>Precision</b>	26,416	26,416	26,416	26,416	26,416	<b>79,248</b>
	Production to Date	0	28,218	0	<i>TBD</i>	<i>TBD</i>	<b>28,218</b>
DTAF260005	Quadrant Target <b>Che K'Li</b>	3,716	3,717	3,717	2,230	2,230	<b>11,150</b>
	Production to Date	10,302	0	0	<i>TBD</i>	<i>TBD</i>	<b>10,302</b>

# Multiple Benefits to Society

- **Indicator:** Compliance with Historical Resources Act.
- **Target:** 100% compliance with the Historical Resources Act.

# Historical Resources

- **Assessment:** Proposed activities for the 2005-06 harvest season had a historical resources screening along with fieldwork for pre- and post harvest by consultant. No FHP's incorporated specific heritage sites.

# Multiple Benefits to Society

- **Indicator:** Forest Management Plans (FMP's) which incorporated the needs of other stakeholders.
- **Target:** Reasonable efforts have been made to incorporate the needs of other stakeholders in FMP's.

# Stakeholder Input

- **Assessment:**
  - Efforts were made to open extra lines to reroute Watt Mountain Wanderers traffic around operations, and, there was suspension of loading and hauling during the High Level Jamboree (safety).
  - Other: providing access to cabins, traplines, and involving stakeholders in operations (pile burning).



# Multiple Benefits to Society

- **Indicator:** The number (%) of business and employment opportunities given to local employers and/or citizens.
- **Target:** >80% of the contracts administered by the companies on the DFA completed by local businesses.

# Contracts Administered

Employment Category	Number of Contracts	Local	% Local
Harvesting/ Load & Haul	64	62	97%
Field Services	60	47	78%
Silviculture	18	15	83%
Administration	17	16	94%
	159	140	88%

\*\*combined for both companies

# Multiple Benefits to Society

- **Indicator:** The number of Business and Wood Supply Agreements (WSA's) with local tenure holders and processing facilities.
- **Target:** 100% adherence to contractual obligations and agreements.

# Contractual Obligations and Agreements

- Tolko Industries Ltd.
  - LaCrete Sawmills Ltd.
  - Crestview Sawmills Ltd.
  - LRR Cree Nation
  - Dene Tha First Nation
  - Precision Lumber
- Footner Forest Products Ltd.
  - LaCrete Sawmills
  - LRR Cree Nation
  - Dene Tha First Nation
  - Paddle Prairie
  - Netaskinan Dev. Corp.
  - Ridgeview Mills
  - Precision Lumber

# Accepting Society's Responsibility for Sustainable Development

- **Indicator:** Percentage of aboriginal communities that are consulted annually regarding operations.
- **Target:** The companies will seek input and/or representation from each of the aboriginal communities affiliated with the NPTC and Paddle Prairie Metis Settlement regarding operational planning and/or participation in advisory groups. No variance is acceptable.

# Aboriginal Consultation

- Assessment:
  - Series of open houses were conducted between September 6 and 16, 2005 and one on November 29th (Fox Lake), to ensure that 100% of the aboriginal communities were visited.

# Accepting Society's Responsibility for Sustainable Development

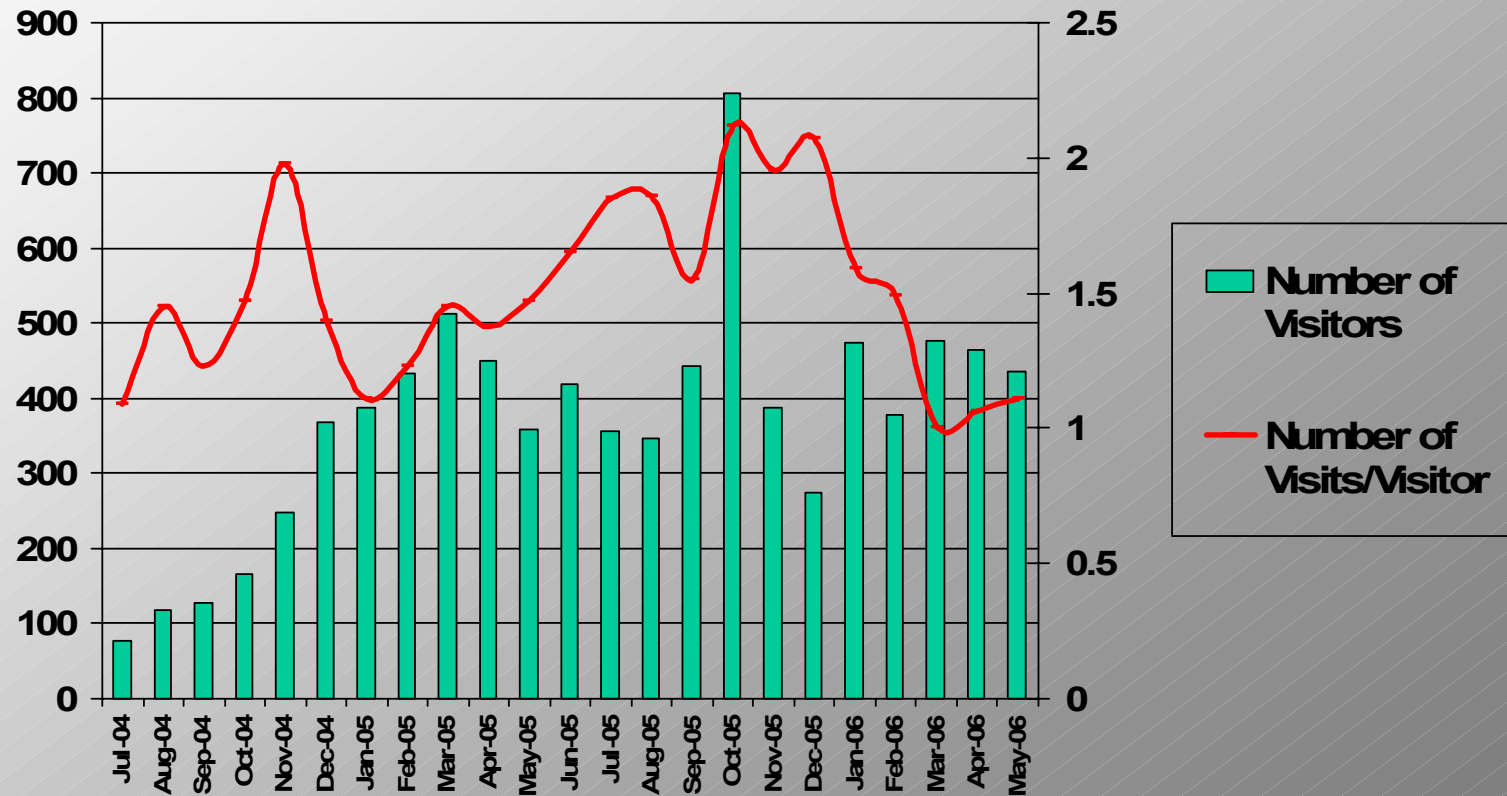
- **Indicator:** The number of different opportunities and mechanisms for public input and the level of participation in each component.
- **Target:** The Companies will implement a number of mechanisms for public participation according to the CSA Z764-96 guidelines.

# Public Participation and Providing Information

- Assessment:
  - PAC: 10 meetings
  - Open Houses: Tolko open house (08/25), 5 community open houses between September 6 - 8th.
  - Newspaper articles
  - Website available to promote activities, show plans and educate the public.



# Website Activity



# Accepting Society's Responsibility for Sustainable Development

- **Indicator:** The number of different opportunities and mechanisms used to increase awareness of forestry.
- **Target:** Continual improvement in the number of mechanisms used.

# Forest Education

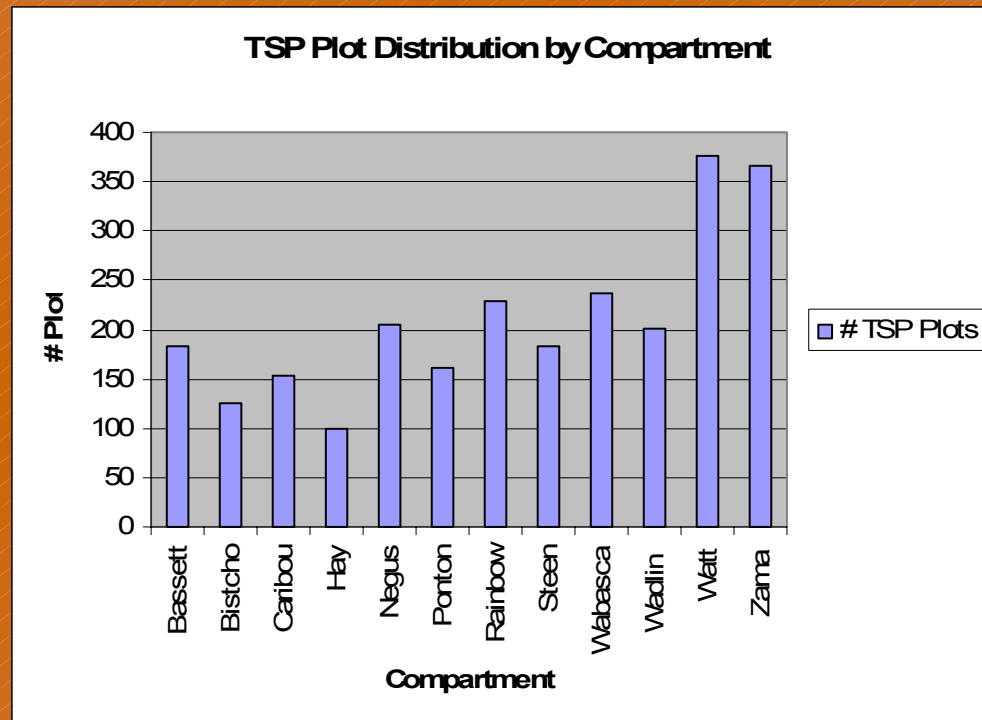
	2003-04	2004-05	2005-06
<b>Forest Education Society</b>	1	1	1
<b>Field/Mill Tours</b>	1	5	4
<b>Community Programs</b>	1	4	7
<b>Schools</b>	0	9	5
<b>PAC Presentations</b>	3	1	0
<i>Totals</i>	<b>6</b>	<b>20</b>	<b>17**</b>

# Growth and Yield Program (DFMP & FMA)

- A total of 2519 Temporary sample plots were established within the FMA.

## Objectives of program:

- Monitor stand growth
- Predict yields on the FMA area



# Company Integration (DFMP)

- *Companies will strive to integrate operations with other embedded operators.*
- **Indicator:** reduce number of FHP's requiring approval from ASRD.
- **Target:** reduction compared to previous year.
- **Result:** 8 FHP's compared to 9 from previous season.
- **Note:** Single AOP being utilized by companies which is another indicator of integrating operations.

# Other programs reported

- Waste Management
- Forest Protection
- Promotional Activities
  - Footner Forest Products and Tolko (HLLD) contributed to a total of 68 Organizations, events, groups, etc.
- Forest Inventory
- Research:
  - Natural Range of Variability
  - Rare Species & Habitats
  - Structure Retention
  - Mixedwood Management Association
  - Spruce Budworm
  - SFM Network
  - White Spruce Tree Improvement
  - Western Boreal Aspen Corporation

# Items to be included in Final Report in February 2007

- Analyses for:
  - habitat availability
  - vertical and horizontal diversity in cutblocks
  - coarse woody debris
  - harvest and reforestation in fire areas.
  - Road disturbance
  - adherence to spatial harvest sequence
  - water resources